



CIRCA 2

Round Edge-Lit LED

Performance Data

CRI

80

CCT

Selectable 3000K, 3500K, 4000K

Projected Lifetime

104,000 Hours (L70)

Dimming

0-10V Dimming Standard, 100% down to 1%

Operating Temperature

-20° to +40°C Ambient

Listing

ETL Listed

Client: _____
Project Name: _____

Order #: _____
Type: _____ Qty: _____



ETL

Listed

10 Yr

Warranty Available

Description

Design and performance all wrapped into one luminaire. The Circa 2 is tailor-made for the architectural community that demands high quality profiles centered around the latest LED technology available.

Acrylic matte diffusion cover is used to make the light more comfortable, edge lighting technology ensures even illumination of the lens.

The Circa 2 has several options, with four sizes corresponding to different lumens. The flexibility with (CLO) Custom Lumen Output allows this fixture to be used in multiple applications such as: Multi-purpose rooms, atrium, open offices, hospitality or retail establishment.

Features

- Heavy gauge extruded aluminum housing. Spun aluminum driver housing. Vacuum formed, single piece acrylic lens.
- Sizes: 14", 24", 36" and 48" diameters
- Aircraft, Stem, Surface/Wall Mount
- Powder Coating finish is adopted, White Matte Texture, Black Matte Texture are standard, Silver Matte Texture customized.
- The Circa 2 boasts a single sheet acrylic matte diffusion cover to make it stand out from the competition. There are no seams on this elegant disc.
- Optics: Frosted Acrylic 120°

CRI

303540

A

B

C

D

E

F

G

Ordering Information

A FIXTURE SERIES

CRI Circa 2 Indirect/Direct

B SIZE

14	14"
24	24"
36	35"
48	47"

C MOUNTING

Please refer to page 3

D WATTAGE

23	23W/2000 (14")
62	62W/6500 (24")
100	100W/11500 (36")
132	132W/16000 (48")

E CCT

303540 3000K/3500K/4000K

F FINISH

W	Textured White
B	Textured Black
S	Textured Silver ²

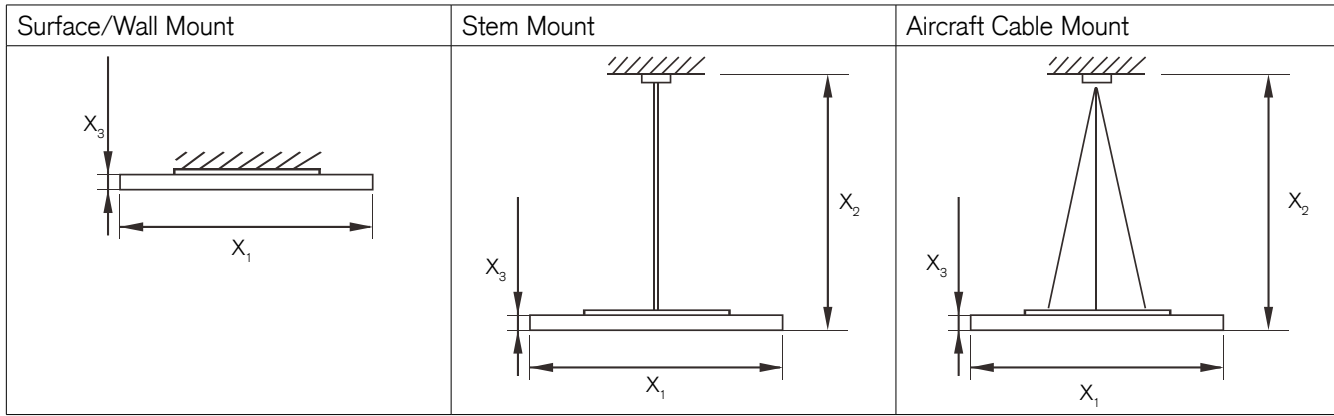
G WARRANTY¹

-	5 Year Warranty
10	10 Year Warranty
10L	10 Year Warranty including labor

¹ 5 Year Warranty is Standard unless specified

² Consult Factory

Dimensions



Inches

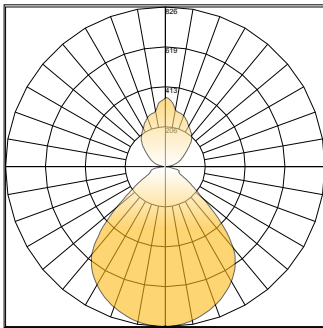
	Surface/Wall Mount	Stem Mount	Aircraft Cable Mount
X_1	14"/18"/24"/35"/47"	14"/18"/24"/35"/47"	14"/18"/24"/35"/47"
X_2	-	36"	96"
X_3	2.2"	2.2"	2.2"

Lumen Chart

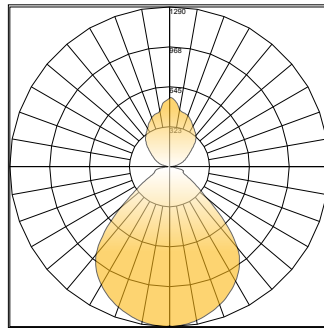
Size	Wattage/ Lumens
14 14"	23 23W/ 2000Lm
18 18"	40 40W/ 4000Lm
24 24"	62 62W/ 6800Lm
35 35"	100 100W/ 11500Lm
47 47"	132 132W/ 16000 Lm

Photometric

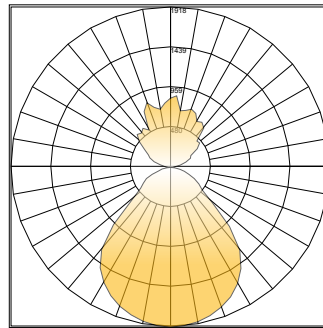
Polar Graph - 14" 30/35/40K 23W



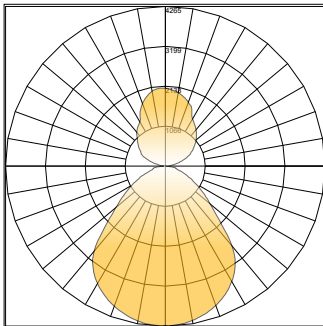
Polar Graph - 18" 30/35/40K 40W



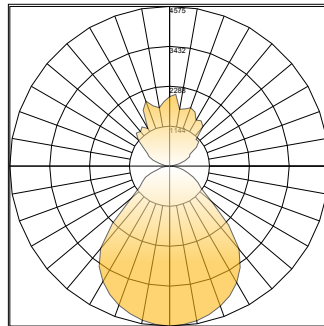
Polar Graph - 24" 30/35/40K 62W



Polar Graph - 36" 30/35/40K 100W



Polar Graph - 47" 30/35/40K 132W



Unified Glare Rating (UGR)

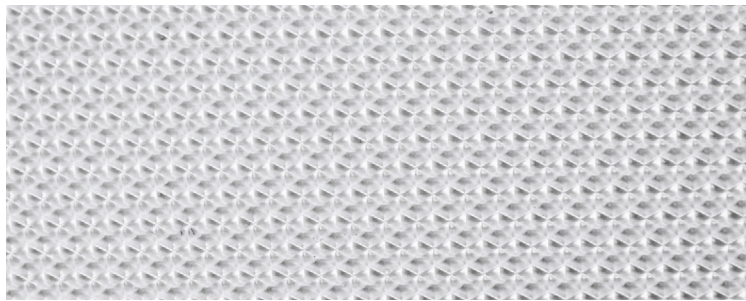
DECO LED Flat Panel with Flat Optix™ Lens:

- Light is redirected from 60° to 90° degrees of luminaire, UGR <19
- Conical structures built into the lens minimize high angle glare
- Allows for increased efficacy, rather than lumen output glaring at occupants
- High efficiency and energy saving
- Protection class: IP44 Damp Location Rated
- Increased productivity



— = Volumetric flat panel with micro-prismatic lens will reduce glare going into the occupant's eyes
 — = 90° - - - = 60°

Flat Optics™ Detail



Micro-prismatic technology redirects high-angle light, reducing visual glare. The light above 60° is suppressed to improve the Unified Glare Rating (UGR). This allows for the luminaire to be IESNA RP1-04 & EN12464 compliant, which are standards for office and indoor lighting.

Standard LED Flat Panel:

- Harsh glare at viewing angles above 60°, UGR >24
- Wide beam angle at 120°
- Uncomfortable glare
- Reduction in visibility caused by intense light source in field of view
- Protection class: IP22 protects only from objects greater than 12 millimeters
- Loss of productivity



■ = High glare flat panel makes occupant's eyes feel uncomfortable
 — = 90° - - - = 60°

UGR Criteria

UGR:	Hopkinson's Criterion:
<10	Imperceptible
<13	Just Perceptible
<16	Perceptible
<19	Acceptable
>22	Unacceptable
>25	Just Uncomfortable
>28	Uncomfortable

Micro-prismatic conical structures provide the most optimal luminance of a fixture from any viewing angle. The UGR rating of less than 19 provides the most acceptable glare for task lighting.

Mounting Options

CR14-SMK-W	Surface mount kit for 14 inch Circa 2.0, White
CR14-SMK-B	Surface mount kit for 14 inch Circa 2.0, Black
CR24-SMK-W	Surface mount kit for 24 inch Circa 2.0, White
CR24-SMK-B	Surface mount kit for 24 inch Circa 2.0, Black
CR3547-SMK-W	Surface mount kit for 35 and 47 inch Circa 2.0, White
CR3547-SMK-B	Surface mount kit for 35 and 47 inch Circa 2.0, Black
CR-AC-W-96	96in Aircraft cable and white canopy kit
CR-AC-B-96	96in Aircraft cable and Black canopy kit
CR-PF-8-W	Clear 5 wire power cord/White
CR-PF-8-B	Clear 5 wire power cord/Black
CR14-STMK-W	Stem mount kit for 14 inch Circa 2.0, White
CR14-STMK-B	Stem mount kit for 14 inch Circa 2.0, Black
CR24-STMK-W	Stem mount kit for 24 inch Circa 2.0, White
CR24-STMK-B	Stem mount kit for 24 inch Circa 2.0, Black
CR3547-STMK-W	Stem mount kit for 35 and 47 inch Circa 2.0, White
CR3547-STMK-B	Stem mount kit for 35 and 47 inch Circa 2.0, Black