

DESCRIPTION

Introducing Hazi, the luminaire series designed to thrive in harsh, hazardous, and industrial environments. Offering a wide array of LED luminaires, Hazi delivers reliable lighting solutions that endure the toughest operational conditions. This results in reduced energy consumption, lower maintenance costs, and minimized manpower requirements. Engineered to excel in Class I, Division 2 environments, Hazi luminaires feature a rugged design and efficient heat dissipation, ensuring durability in challenging conditions, while delivering long life and high lumen performance.



Client:	
Order #:	
Project:	
Type:	

FEATURES

- **HOUSING:**
Heavy-Duty Die Cast Aluminum Housing
- **LISTING & RATINGS:**
ETL Listed for Hazardous Locations Per UL844 as Follows: Class 1, Division 2 Groups A, B, C, D; T4 Temperature Rating, -25°C to +50°C Ambient. Suitable for Wet Locations, Sealed LED Compartment
- **FINISH:**
Powdercoat Finish Over a Chromate Conversion Coating.
- **LENS:**
Clear Tempered Glass Lens

- **MOUNTING OPTIONS:**
Mountings Include Suspended (Conduit by Others), Ceiling Mount Box, 25° and 90° Wall Mount with Box, 25° and 90° Stanchions, and Adjustable Yoke. Yoke Mount Includes 3' 16/3 SJOOW Cord and Rated Connector. Rated for 6 #12 AWG 90°C for Through Wiring. Mounts Shipped Separately, Field Installed.
- **EASYLED LED:** Aluminum Boards
- **WATTAGE:** Array: 56.7w, System: 64w
- **DRIVER:**
Electronic Driver, 120-277V, 50/60Hz; Less Than 20% THD and PF>0.90. Standard Internal Surge Protection 6kV. 0-10V Dimming Standard for a Dimming Range of 100% to 10%; Dimming Source Current is 150 Micro-amps.

PERFORMANCE DATA

CRI

80+

CCT

4000K, 5000K

Projected Lifetime

>100,000 Hours (L70)

Dimming

0-10V Dimming Standard, 10% down to 100%

Operating Temperature

-25°C to +50 °C Ambient

Warranty

5 year Standard
10 year Optional

ORDERING INFORMATION

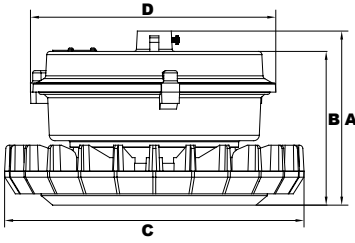
HAZI							
-------------	--	--	--	--	--	--	--

	B	C	D	E	F	G	I
A	FIXTURE SERIES		C		F		I
	Hazi	Hazardous luminaire	CCT		OPTIONS		
			40	4000K	SP	Surge Protection	
B	WATTAGE/LUMENS		50	5000K	G		
	64	64W/8957 ¹	D		MOUNTING		
			U	120-277V	SP	Suspended	
			E		WM	Wall Mounts	
			G	Gray	SM	Stanchion Mounts	
			F		FL	Flood	
			G		I		
			WARRANTY²		-	5 Year Warranty	
					10	10 Year Warranty	
					10L	10 Year Warranty including labor	

¹Delivered Lumens (5000K)

² 5 Year Warranty is Standard unless specified

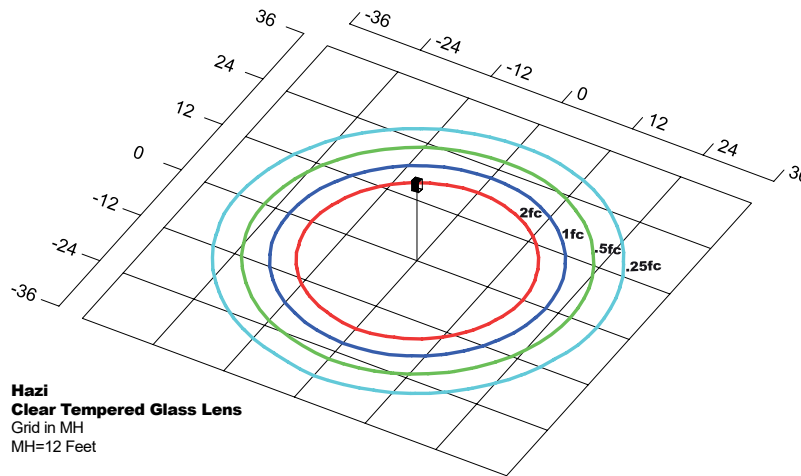
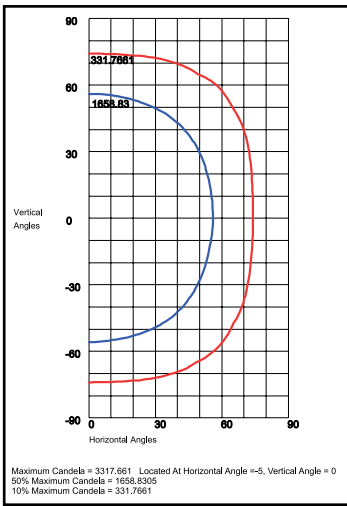
DIMENSIONS



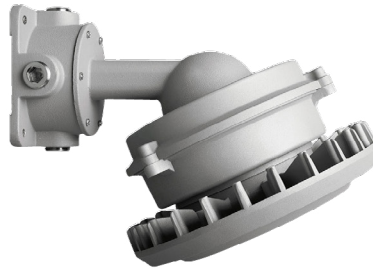
Height 1 (A)	6" (154mm)
Height 2 (B)	5¼" (136mm)
Diameter 1 (C)	10½" (265mm)
Diameter 2 (D)	8½" (217mm)

½" Hub

PHOTOMETRIC DATA



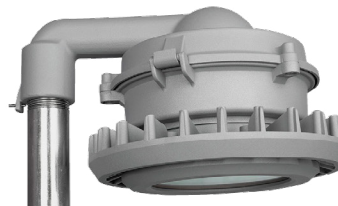
SUSPENDED



WALL MOUNTS

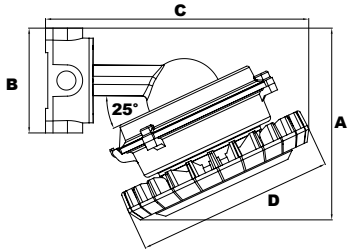


STANCHION MOUNTS



FLOOD

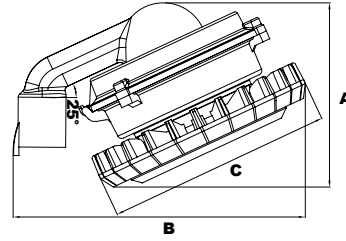
25° Wall Mount



DIMENSIONS

Height 1 (A)	10" (256mm)
Height 2 (B)	5½" (140mm)
Length (C)	13¾" (352mm)
Width (D)	10½" (265mm)

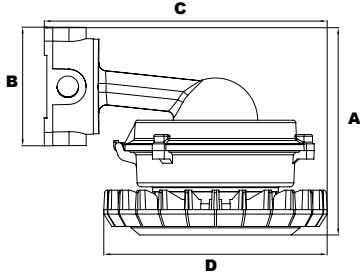
25° Stanchion



DIMENSIONS

Height 1 (A)	8½" (216mm)
Length (B)	13½" (343mm)
Width (C)	10½" (265mm)

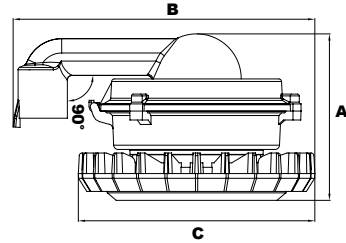
90° Wall Mount



DIMENSIONS

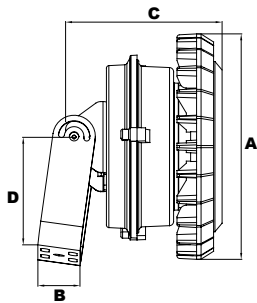
Height 1 (A)	9¾" (246mm)
Height 2 (B)	5½" (140mm)
Length (C)	13¾" (336mm)
Width (D)	10½" (265mm)

90° Stanchion



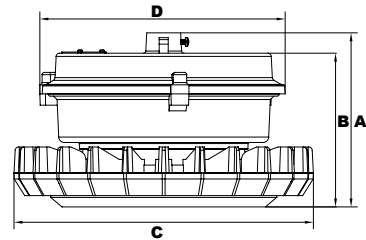
DIMENSIONS

Height 1 (A)	7¼" (186mm)
Length (B)	13¾" (338mm)
Width (C)	10½" (265mm)



DIMENSIONS

Height (A)	10½" (265mm)
Width (B)	2" (50mm)
Length 1 (C)	7¼" (184mm)
Length 2 (D)	5" (126mm)



DIMENSIONS

Height 1 (A)	6" (154mm)
Height 2 (B)	5¼" (136mm)
Diameter 1 (C)	10½" (265mm)
Diameter 2 (D)	8½" (217mm)