

DESCRIPTION

The REMY bollard integrates cutting-edge reflector technology to achieve high efficiency and optimal visual comfort while adhering to dark sky criteria. Engineered to eliminate glare through controlled downward light, it is specifically designed for illuminating entrances, residential areas, driveways, pathways, and squares. The LED luminaires boast features such as extended lifespan, minimal maintenance, and consistent performance over their lifetime. Compliant with dark sky standards, the bollard is constructed with an extruded aluminum body, a low copper content die-cast aluminum housing, stainless steel screws, a durable silicone rubber gasket, and a clear impact-resistant UV-stabilized polycarbonate lens.



Client:	
Order #:	
Project:	
Type:	

FEATURES

- **Housing:**
Extruded Aluminum Housing with Flush Mounting Base, Flat Top. Bollards Can Be Cut to Custom Lengths Upon Request.
- **Listing & Ratings:**
CSA: Listed for Wet Locations, ANSI/UL 1598, 8750 IP66 Sealed LED Compartment.
- **Finish:**
Textured Architectural Bronze or Black Powdercoat Finish Over a Chromate Conversion Coating. Custom Colors Available Upon Request.
- **Styles:**
360° Light Distribution, 120° Shield or 180° Shield
- **Lens:**
Clear UV-Stabilized Polycarbonate Vandal-Resistant Lens
- **Mounting Options:**
Mounting Kit with 8" Zinc-Plated Anchor Bolts, Included.
- **EasyLED LED:**
Aluminum Boards
- **Wattage:**
360° Arrays: 12w & 16.6w, System: 12.9w & 18.9w
180° & 120° Arrays: 10w & 15.5w, System: 11.2w & 17w; (70w HID Equivalent)
- **Driver:**
Electronic Driver, 120-277V, 50/60Hz; Less Than 20% THD and PF>0.90. Standard Internal Surge Protection 2kV. 0-10V Dimming Standard for a Dimming Range of 100% to 10%; Dimming Source Current is 150 Micro-amps.

PERFORMANCE DATA

CRI	70+
CCT	3000K, 4000K, 5000K
Projected Lifetime	>147,000 Hours (L70)
Dimming	0-10V Dimming Standard, 10% down to 100%
Operating Temperature	-40°C to +50°C Ambient
Warranty	5 year Standard 10 year Optional

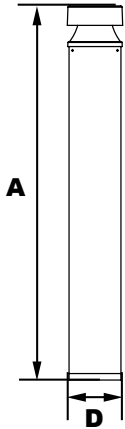
ORDERING INFORMATION

REMY						
-------------	--	--	--	--	--	--

	B	C	D	E	F	G
A	FIXTURE SERIES		C		OPTIONS	
	Remy		CCT		SF	Single Fuse
B	WATTAGE/LUMENS RAWP-5L		30	3000K	DF	Double Fuse
	12	12W/541 ¹	40	4000K	SP	Surge Protection
	17	17W/758 ¹	50	5000K	GF1	GFCI Outlet, 15A, 120V
D	VOLTAGE		E		S5	Microwave Sensor with Dimming & Remote Programming, 120-277V Only. See P17125 Spec Page for Details.
	U		FINISH		G	
	120-277V		BZ		WARRANTY²	
			BL		-	5 Year Warranty
			C		10	10 Year Warranty
			Custom		10L	10 Year Warranty including labor

¹Delivered Lumens (5000K)
² 5 Year Warranty is Standard unless specified

DIMENSIONS

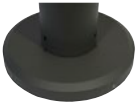


Diameter (D) | 4¾" (120mm)
Height (A) | 40⅞" (1019mm)

Accessories & Replacement Parts:

Mounting Accessories (Order Separately, Field Installed)	
BREBASE*	Bollard Retrofit Base Kit Adapts New Bollards to Most Existing Bolt Patterns. Fits all LEPG Bollards. Die Cast with Powdercoat Finish, Hardware Included. 1½" Dia. x 1¼" H

*Specify Color: Z=Bronze, B=Black, C=Custom (Consult Factory)



BREBASE*

*Shown Mounted

Accessories (Order Separately, Field Installed)	
P17126	Remote Programming Tool for P17125



P17126

Replacement Parts (Order Separately, Field Installed)	
P17125	Internal Microwave Sensor with Dimming & Remote Programming, 120-277V Only. See P17125 Spec Page for Details.
BOADP1	Adapter Plate with Gaskets for Outlet Boxes. Fits LEPG Round Bollards. Die Cast with Bronze Powdercoat Finish.

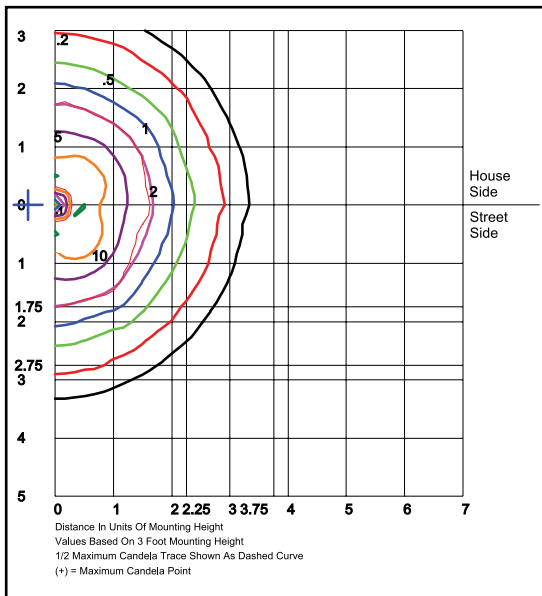


P17125

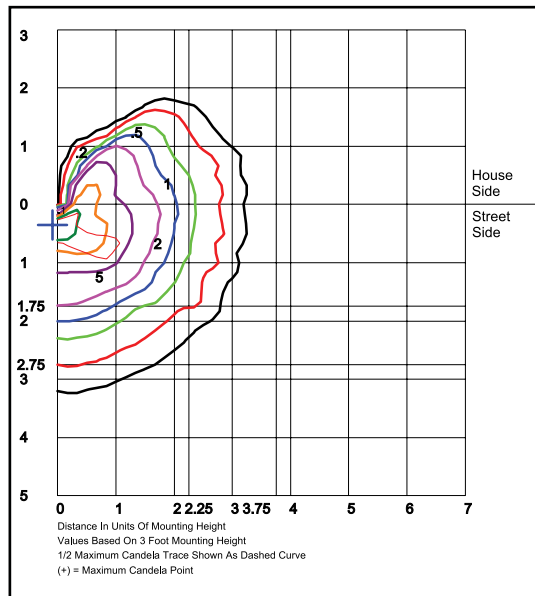


BOADP1

Photometric Data



B50QF1X17U5K
360° Open - Clear Glass Lens
 Grid in feet, Mounting Height = 3 ft.



B5HQF1X16U5K
180° Shield - Clear Glass Lens
 Grid in feet, Mounting Height = 3 ft.